

512304

532304

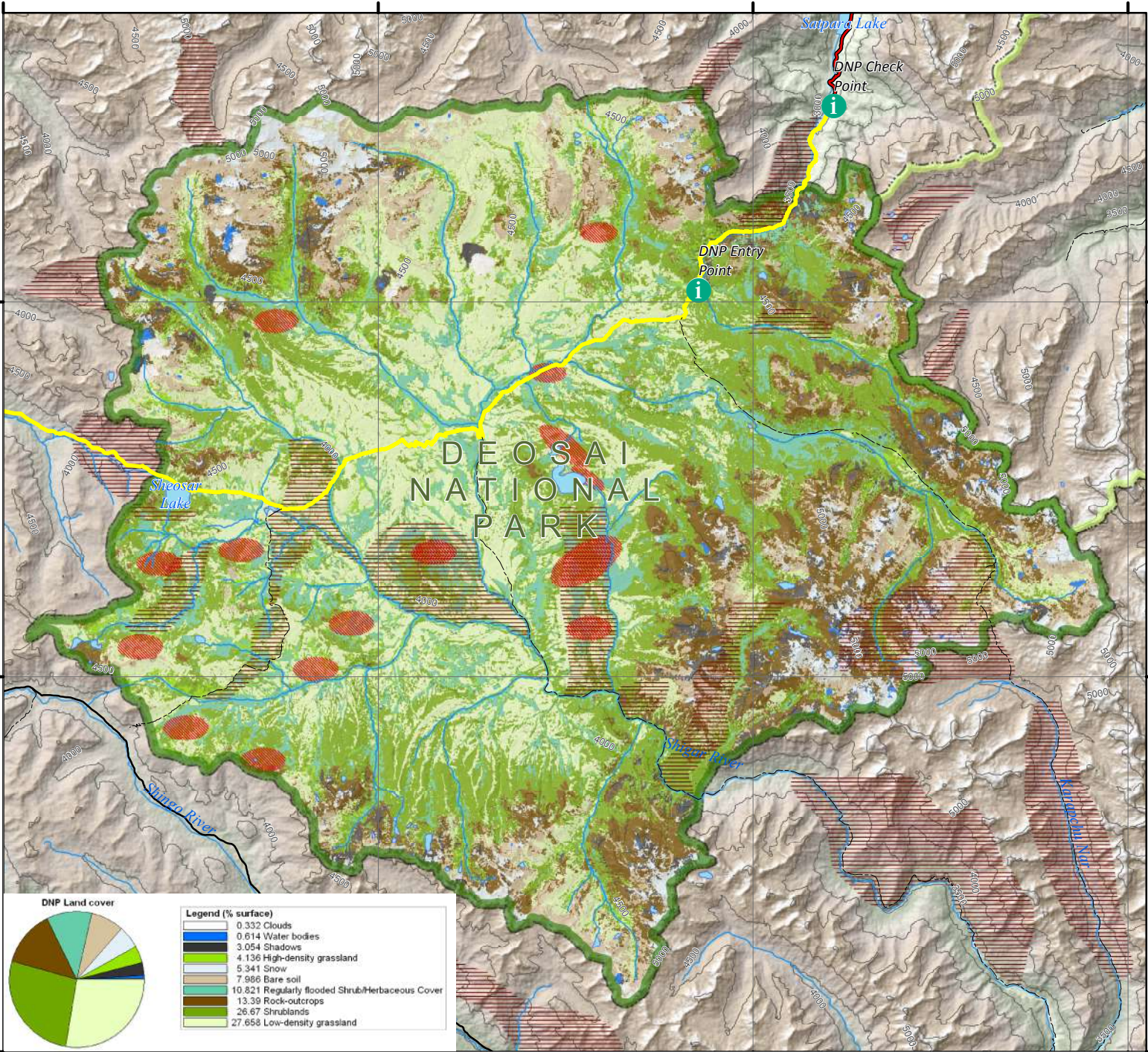
552304

572304

3882415

3882415

3882415



DNP Land Cover Map

Date: 21/03/2020

Legend

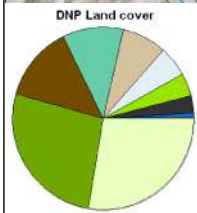


Land Cover Classes

- Bare soil
- Rock-outcrops
- Low-density grassland
- High-density grassland
- Shrublands
- Regularly flooded Shrub/
Herbaceous Cover
- Water bodies
- Snow
- Clouds
- Shadows

Bears presence

Date of survey



Legend (% surface)

- 0.332 Clouds
- 0.614 Water bodies
- 3.054 Shadows
- 4.136 High-density grassland
- 5.341 Snow
- 7.986 Bare soil
- 10.821 Regularly flooded Shrub/Herbaceous Cover
- 13.39 Rock-outcrops
- 26.67 Shrublands
- 27.658 Low-density grassland

Coordinate System: WGS 1984 UTM Zone 43N
 Projection: Transverse Mercator
 Datum: WGS 1984
 False Easting: 500,000.0000
 False Northing: .0000
 Central Meridian: 75.0000
 Scale Factor: .9996
 Latitude Of Origin: .0000
 Units: Meter

